



VILLA LABECO s.r.o.
Chrapčiakova 1
052 01 Spišská Nová Ves

ISOTACHOPHORESIS

APPLICATION NOTE No. 36

Simple and fast analysis of organic acids in honey

FEATURES:

Many organic acids are present in honey. Isotachophoresis provides very efficient method for fast and simple analysis. No sample pretreatment only dilution (ca 50 x is necessary). Time of analysis is ca 10 - 15 min.

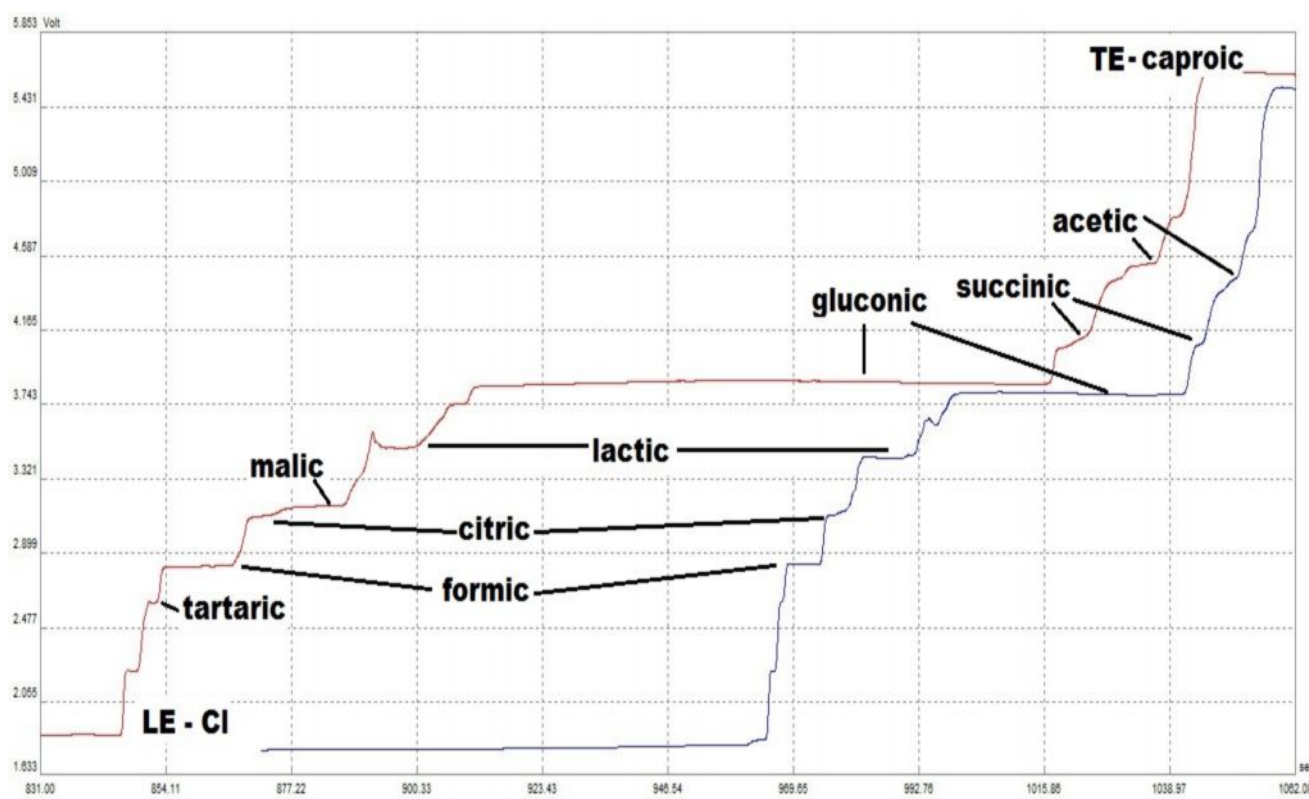


Fig. 1: Record (conductivity detector) from analysis of 2 different types of honey diluted in water 3g/100 ml . Only major constituents were identified.

Conditions: :Leading electrolyte (LE): 10 mM HCl + 20mM beta alanine + 0,1M%HEC

Terminating electrolyte (TE) : 5 mM caproic acid, V = 30 ul

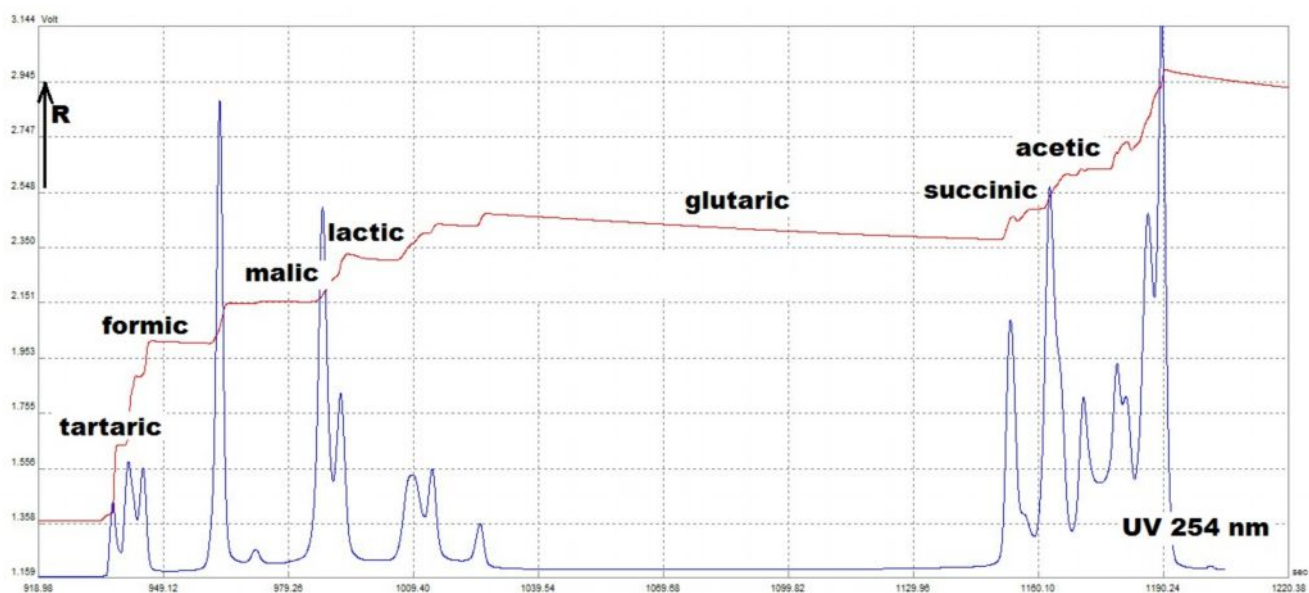


Fig. 2. Record from analysis of honey with conductivity and UV detector. Only major constituents were identified. Many, mainly UV absorbing constituents are unknown. Conditions as Fig. 1.